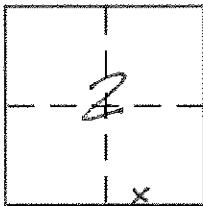


CORNER RECORD

Document Number 31

City of _____ County of El Dorado, California

Brief Legal Description Lot 155 Montgomery Estates at Lake Christopher No 2
S 2, T 12 N, R 18 E, MDM SD D-17



CORNER TYPE

Government Corner ☐ Control ☐
 Meander ☐ Property ☒
 Rancho ☐ Other ☐
 Date of Survey Sept. 16, 2000

COORDINATES (Optional)

N. _____
 E. _____
 Zone _____ NAD27 ☐ NAD83 ☐
 NAD83 Epoch _____
 Elev. _____
 Vert. Datum: NGVD29 ☐ NAVD88 ☐
 Meas. Units: Metric ☐ Imperial ☐

Corner - Left as found ☒ Found and tagged ☐ Established ☐ Reestablished ☐ Rebuilt ☐

Identification and type of corner found: Evidence used to identify or procedure used to establish or reestablish the corner:

See pg 2

A description of the physical condition of the monument as found and as set or reset:

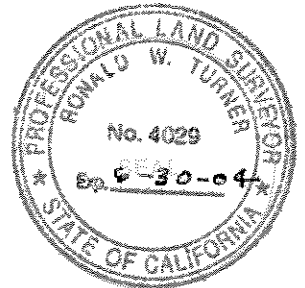
See pg. 2

SURVEYOR'S STATEMENT

This Corner Record was prepared by me or under my direction in conformance with

the Land Surveyor's Act on 10 - 3 2000

Signed Ronald W. Turner P.L.S. or R.C.E. No. 4029



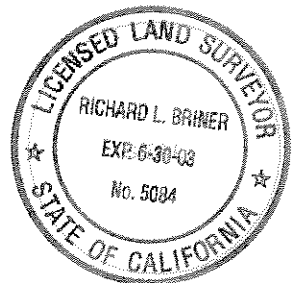
COUNTY SURVEYOR'S STATEMENT

This Corner Record was received DEC 18, 2000

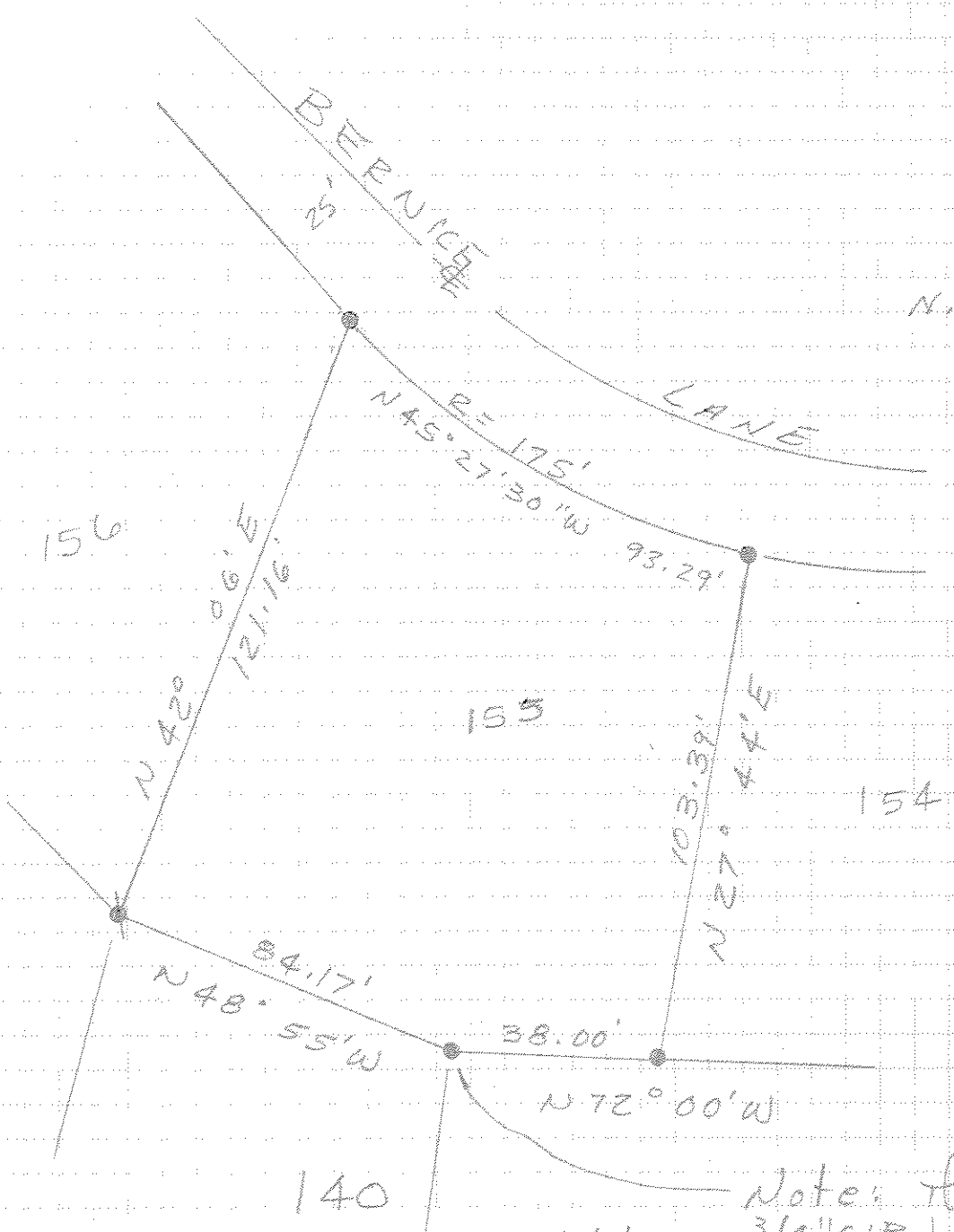
and examined and filed JAN 11, 2001

Signed [Signature] P.L.S. or R.C.E. No. 5084

Title Assoc. Land Surveyor



County Surveyor's Comment _____



Note: This found
 3/4" CIP bears
 S 79° 23' E 0.8' from
 record position

- ... End 3/4" CIP
 L.S. 2.725
- ... End 1/2" bar &
 CIP RCE 1625.7

MONTGOMERY ESTATES
 AT LAKE CHRISTOPHER LAKE #2
 SD D-17