

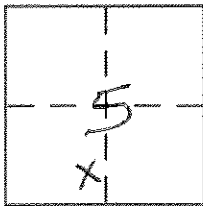
CORNER RECORD

Document Number 10

City of So. Lake Tahoe

County of E. Dorado, California

Brief Legal Description Lot 41, Gardner Mtn. Sub. Addn. #3, B-37
SS, T12N, R18E, MDM



CORNER TYPE

Government Corner ☐ Control ☐
 Meander ☐ Property ☒
 Rancho ☐ Other ☐
 Date of Survey Aug. 25, 2000

COORDINATES (Optional)

N. _____
 E. _____
 Zone _____ NAD27 ☐ NAD83 ☐
 NAD83 Epoch _____
 Elev. _____
 Vert. Datum: NGVD29 ☐ NAVD88 ☐
 Meas. Units: Metric ☐ Imperial ☐

Corner - Left as found ☒ Found and tagged ☐ Established ☐ Reestablished ☒ Rebuilt ☐

Identification and type of corner found: Evidence used to identify or procedure used to establish or reestablish the corner:

See pg. 2

A description of the physical condition of the monument as found and as set or reset:

See pg. 2

SURVEYOR'S STATEMENT

This Corner Record was prepared by me or under my direction in conformance with

the Land Surveyor's Act on 11 / 15 / 2000

Signed Ronald W. Turner P.L.S. or R.C.E. No. 4029



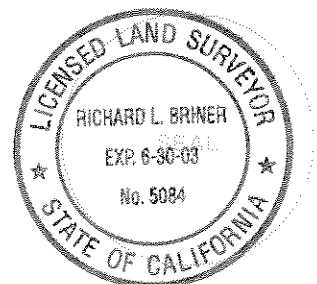
COUNTY SURVEYOR'S STATEMENT

This Corner Record was received DEC 18, 2000

and examined and filed JAN 11, 2001

Signed Paul H. Briner P.L.S. or R.C.E. No. 5084

Title Assoc. Land Surveyor

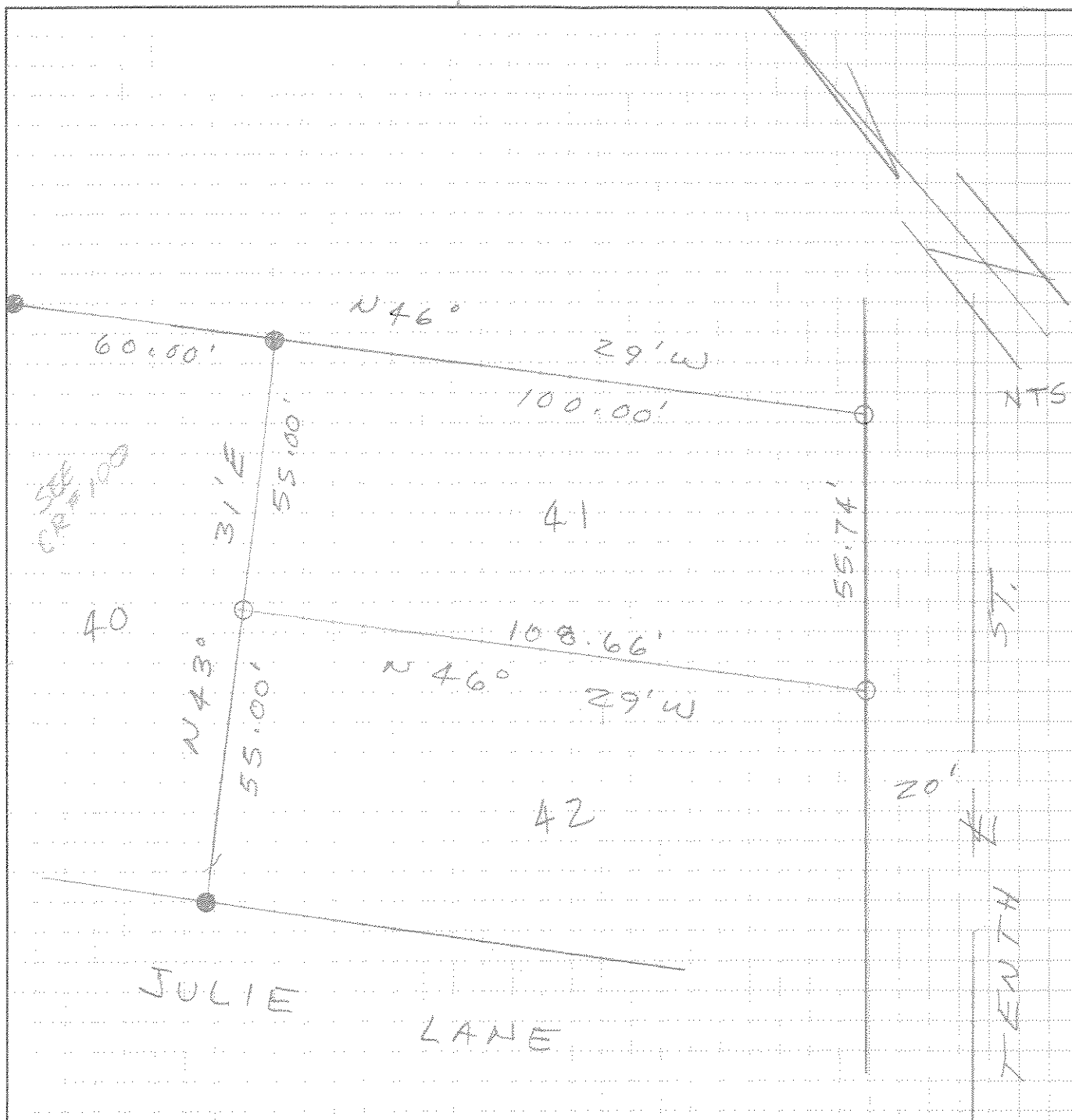


County Surveyor's Comment _____

12-18-05 SW 1/4

ADD. ...

107



● ... End 3/4" IP & plug
PLS 4029

○ ... Set 3/4" IP & plug
PLS 4029

GARDNER MOUNTAIN
SUBD. ADDN. NO 3
SD B-37